



Tests [Edit Test](#)
 Tests
  Groups
  Links

 **Primary 5 Science (Term 4) - Nan Hua** 
 Duplicate Print Delete Assign Test**Test Introduction**[+ Add Introduction](#)**61 Questions** (63 Points)Question Bank: 9,275 Questions 

Test Questions

1 Test Assignment

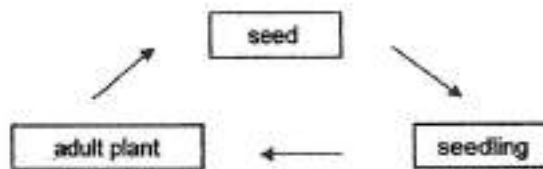
Question 1

Primary 5 Science » Primary 5 Science (Term 4)

2 pts

For each question, four options are given. One of them is the correct answer. (28 x 2 marks = 56 marks)

The diagram below shows the life cycle of plant A.



Which of the following statements is/are correct based on the diagram?

- A) Plant A has 3 life cycles.
- B) Plant A is a flowering plant.
- C) The seed of plant A is dispersed by animals.

- A) A only
- B) B only
- C) B and C only
- D) A, B and C only

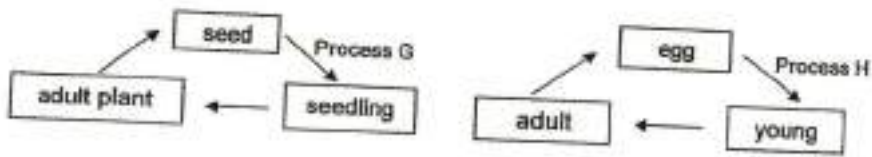
Question Type: Multiple Choice
 Randomize Answers: No
 Date Added: Tue 27th Jul 2021
 Last Modified: N/A
 QID#: 28,531,965

Question 2

Primary 5 Science » Primary 5 Science (Term 4)

2 pts

The diagram below shows the life cycle of a plant and the life cycle of a chicken.



How are the processes G and H similar?

- A) Both processes require light.
- ✓ B) Both processes require warmth.
- C) Both processes take place in the dark.
- D) Both processes take place before fertilisation.

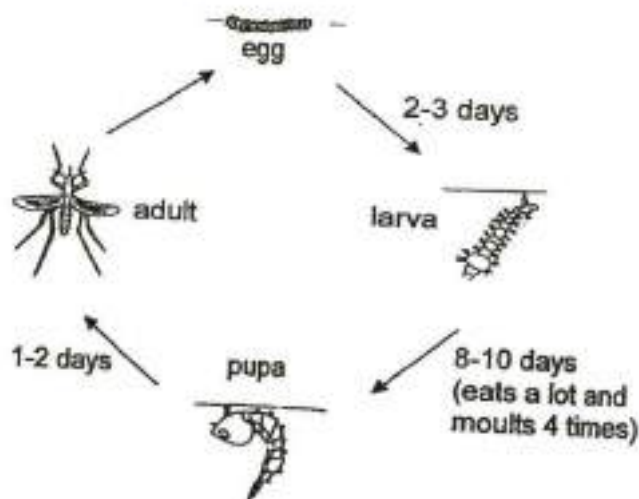
Question Type: Multiple Choice
Randomize Answers: No
Date Added: Tue 27th Jul 2021
Last Modified: N/A
QID#: 28,531,964

Question 3

Primary 5 Science » Primary 5 Science (Term 4)

2 pts

Study the diagram of the life cycle below.



Which of the following statement(s) is/are correct?

- A) Only the adult has wings.
- B) The pupa moults 4 times before turning into an adult.
- C) The whole life cycle will take more than 10 days to complete.

- A) A only
- B) C only
- ✓ C) A and C only
- D) A, B and C

Question Type: Multiple Choice
Randomize Answers: No
Date Added: Tue 27th Jul 2021
Last Modified: N/A
QID#: 28,531,966

[Answers](#) |
 [Edit](#) |
 [Duplicate](#) |
 [Used In](#) |
 [Reorder](#)

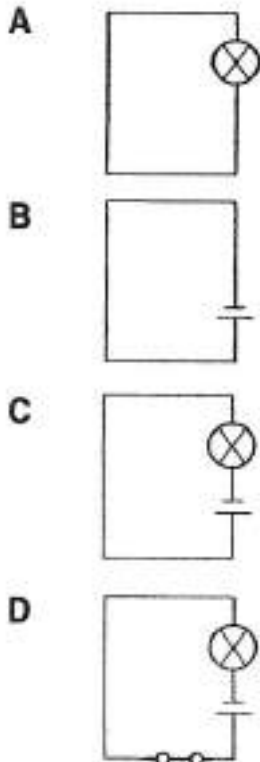
[Remove From Test](#)

Question 4

Primary 5 Science » Primary 5 Science (Term 4)

2 pts

The diagrams below show four electric circuits.



Which of the following circuits allow electric current to flow in the circuit?

- A) A and B only
- B) C and D only
- C) A, C and D only
- ✓ D) B, C and D only

Question Type: Multiple Choice
Randomize Answers: No
Date Added: Tue 27th Jul 2021
Last Modified: N/A
QID#: 28,531,967

[Answers](#) | [Edit](#) | [Duplicate](#) | [Used In](#) | [Reorder](#)

[Remove From Test](#)

Question 5

Primary 5 Science » Primary 5 Science (Term 4)

2 pts

Which of the following statements is most likely the reason for a large amount of sperms to be produced?

- A) To fertilise many eggs at a time.
- B) To show that the male is very healthy.
- ✓ C) To increase the chance of a sperm fertilising an egg.
- D) To shorten the time needed for the sperm to fuse with an egg.

Question Type: Multiple Choice
Randomize Answers: No
Date Added: Tue 27th Jul 2021
Last Modified: N/A
QID#: 28,531,968

[Answers](#) | [Edit](#) | [Duplicate](#) | [Used In](#) | [Reorder](#)

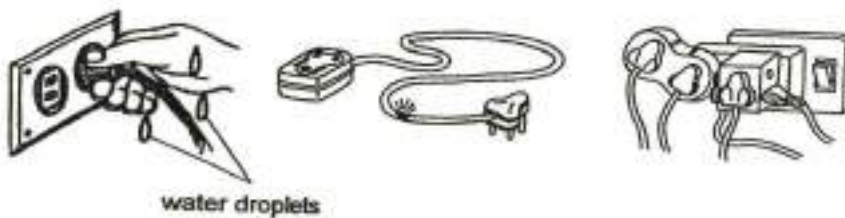
[Remove From Test](#)

Question 6

Primary 5 Science » Primary 5 Science (Term 4)

2 pts

Study the diagrams below.



Which one of the following statements correctly describes the diagrams above?

- A) Reduce consumption of electricity
- B) Increase consumption of electricity
- C) Proper handling of electrical component
- ✓ D) Improper handling of electrical component

Question Type: Multiple Choice
Randomize Answers: No
Date Added: Tue 27th Jul 2021
Last Modified: N/A
QID#: 28,531,969

[Answers](#) | [Edit](#) | [Duplicate](#) | [Used In](#) | [Reorder](#)

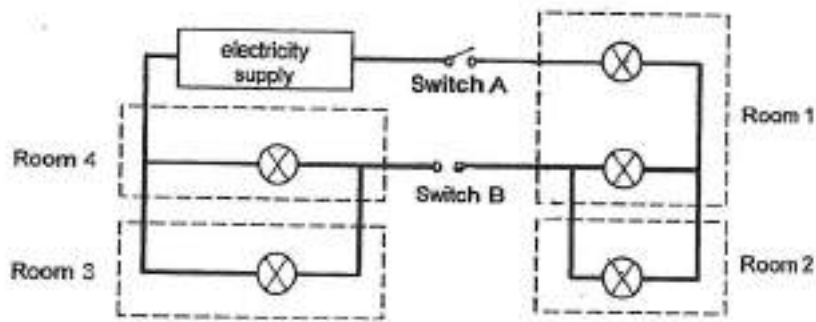
[Remove From Test](#)

Question 7

Primary 5 Science » Primary 5 Science (Term 4)

2 pts

The diagram below shows a circuit with five bulbs.



Based on the diagram above, which one of the following statements is correct?

- A) When only switch A is closed, all the bulbs in the rooms will light up.
- B) When only switch A is opened, the bulbs in rooms 3 and 4 will light up.
- C) When only switch B is closed, the bulbs in rooms 2, 3 and 4 will light up.
- ✓ D) When only switch B is opened, all the bulbs in the rooms will not light up.

Question Type: Multiple Choice
Randomize Answers: No
Date Added: Tue 27th Jul 2021
Last Modified: N/A
QID#: 28,531,970

[Answers](#) | [Edit](#) | [Duplicate](#) | [Used In](#) | [Reorder](#)

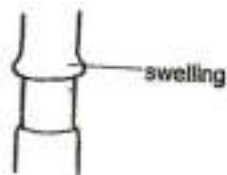
[Remove From Test](#)

Question 8

Primary 5 Science » Primary 5 Science (Term 4)

2 pts

A small and thin ring of the bark is removed from the stem of a plant in an open field. A few days later, a swelling above the ring of the bark that was removed was observed.



Which statement correctly explains the presence of the swelling?

- A) Water travelling up the stem was trapped above the ring.
- ✓ B) Food travelling down the stem was trapped above the ring.
- C) Food and water travelling up the stem was trapped above the ring.
- D) Food and water travelling down the stem was trapped above the ring.

Question Type: Multiple Choice
Randomize Answers: No
Date Added: Tue 27th Jul 2021
Last Modified: N/A
QID#: 28,531,971

[Answers](#) |
 [Edit](#) |
 [Duplicate](#) |
 [Used In](#) |
 [Reorder](#)

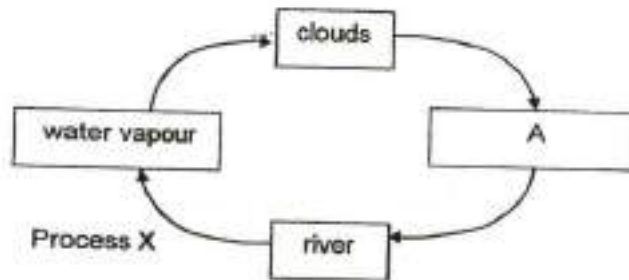
[Remove From Test](#)

Question 9

Primary 5 Science » Primary 5 Science (Term 4)

2 pts

Study the diagram of the water cycle below.



What would be the likely change in the rate of 'Process X' and the amount of 'A' in the diagram when the temperature of the surrounding air increases?

- A)

Process X	A
Decreases	Decreases
- ✓ B)

Process X	A
Increases	Increases
- C)

Process X	A
Increases	Decreases
- D)

Process X	A
Decreases	Increases

Question Type: Multiple Choice
Randomize Answers: No
Date Added: Tue 27th Jul 2021
Last Modified: N/A
QID#: 28,531,972

[Answers](#) |
 [Edit](#) |
 [Duplicate](#) |
 [Used In](#) |
 [Reorder](#)

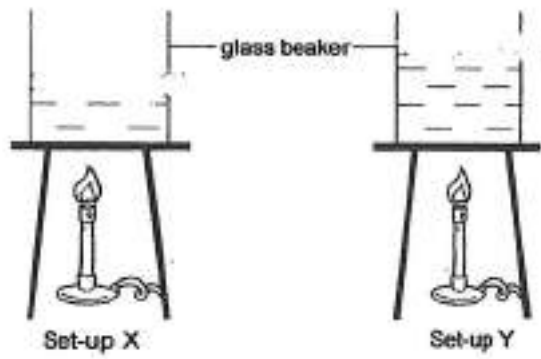
[Remove From Test](#)

Question 10

Primary 5 Science » Primary 5 Science (Term 4)

2 pts

Ali set up the experiment as shown below. He heated the water until the water in the beakers was boiling.



Which of the following statements about the set-ups are correct?

- A The temperature of the boiling water in both beakers is the same.
- B The amount of heat in the boiling water of both set-ups is the same.
- C The amount of heat in the boiling water is greater in set-up Y than in set-up X.
- D The temperature of the boiling water in set-up Y is higher than set-up X.

- ✓ A) A and C only
- B) A and D only
- C) B and C only
- D) B and D only

Question Type: Multiple Choice
 Randomize Answers: No
 Date Added: Tue 27th Jul 2021
 Last Modified: N/A
 QID#: 28,531,973

[Answers](#) | [Edit](#) | [Duplicate](#) | [Used In](#) | [Reorder](#)

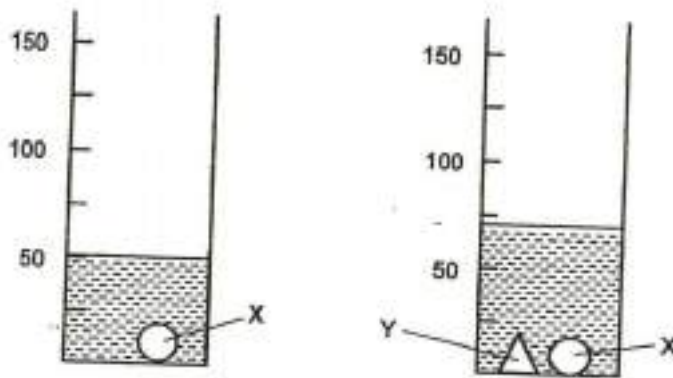
[Remove From Test](#)

Question 11

Primary 5 Science » Primary 5 Science (Term 4)

2 pts

Mary conducted an experiment with objects X and Y. She put object X into a measuring cylinder with 20 ml of water. Then she put object Y into the same measuring cylinder. The diagram below shows the observation made by Mary when each object was put in.



Which of the following conclusion(s) can be drawn from Mary's observations?

- A Object X is heavier than object Y.
- B Object X occupies more space than object Y.
- C Only objects X and Y occupy space in the measuring cylinder.

- A) A only
- ✓ B) B only
- C) B and C only
- D) A, B and C

Question Type: Multiple Choice
 Randomize Answers: No
 Date Added: Tue 27th Jul 2021
 Last Modified: N/A
 QID#: 28,531,974

[Answers](#) |
 [Edit](#) |
 [Duplicate](#) |
 [Used In](#) |
 [Reorder](#)

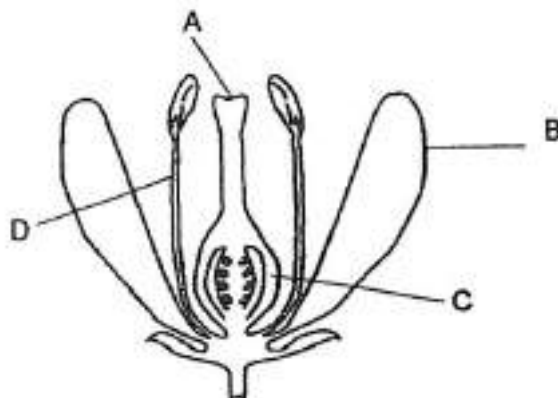
[Remove From Test](#)

Question 12

Primary 5 Science » Primary 5 Science (Term 4)

2 pts

The diagram below shows the reproductive parts of a flower.



Which part(s) will dry up and drop off after fertilisation?

- A) B only

- B) A and C only
 C) B and D only
 ✓ D) A, B and D only

Question Type: Multiple Choice
Randomize Answers: No
Date Added: Tue 27th Jul 2021
Last Modified: N/A
QID#: 28,531,975

Answers | Edit | Duplicate | Used In | Reorder

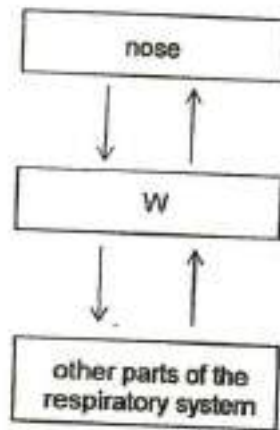
Remove From Test

Question 13

Primary 5 Science » Primary 5 Science (Term 4)

2 pts

The diagram below shows the human respiratory system.



Which one of the following correctly identifies W and its function?

- A)

W	Function
lungs	allow for gaseous exchange
- B)

W	Function
heart	pumps blood to all parts of the body
- C)

W	Function
mouth	produces saliva to moisten the air
- ✓ D)

W	Function
windpipe	provides passage for air to flow to and away from the lungs

Question Type: Multiple Choice
Randomize Answers: No
Date Added: Tue 27th Jul 2021
Last Modified: N/A
QID#: 28,531,976

[Answers](#) |
 [Edit](#) |
 [Duplicate](#) |
 [Used In](#) |
 [Reorder](#)

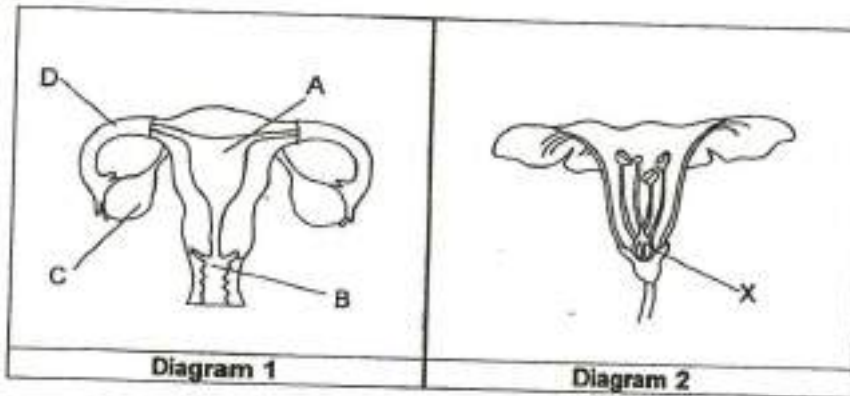
[Remove From Test](#)

Question 14

Primary 5 Science » Primary 5 Science (Term 4)

2 pts

Sammy drew diagrams 1 and 2 below showing the reproductive parts of a human and a plant respectively.



Which one of the following part in diagram 1 performs the same function as part X in diagram 2?

- A) A
- B) B
- ✓ C) C
- D) D

Question Type: Multiple Choice
Randomize Answers: No
Date Added: Tue 27th Jul 2021
Last Modified: N/A
QID#: 28,531,977

[Answers](#) |
 [Edit](#) |
 [Duplicate](#) |
 [Used In](#) |
 [Reorder](#)

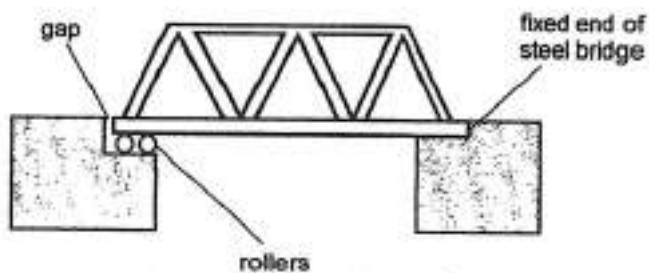
[Remove From Test](#)

Question 15

Primary 5 Science » Primary 5 Science (Term 4)

2 pts

The diagram below shows a steel bridge with one end of the bridge fixed while a gap is left at the other end supported by rollers.



Why is there a gap at one end of the steel bridge?

- A) To allow the bridge to lose heat to the gap on a hot day.

- B) To allow the bridge to increase in mass due to expansion on a hot day.
- ✓ C) To allow the bridge to move towards the gap due to expansion on a hot day.
- D) To allow the bridge to move towards the gap due to contraction on a cold day.

Question Type: Multiple Choice
Randomize Answers: No
Date Added: Tue 27th Jul 2021
Last Modified: N/A
QID#: 28,531,978

[Answers](#) | [Edit](#) | [Duplicate](#) | [Used In](#) | [Reorder](#)

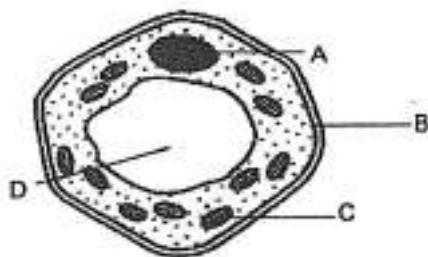
[Remove From Test](#)

Question 16

Primary 5 Science » Primary 5 Science (Term 4)

2 pts

The diagram below shows a plant cell with its parts labelled.



Which part of the cell controls the movement of substances in and out of the cell?

- A) A
- ✓ B) B
- C) C
- D) D

Question Type: Multiple Choice
Randomize Answers: No
Date Added: Tue 27th Jul 2021
Last Modified: N/A
QID#: 28,531,979

[Answers](#) | [Edit](#) | [Duplicate](#) | [Used In](#) | [Reorder](#)

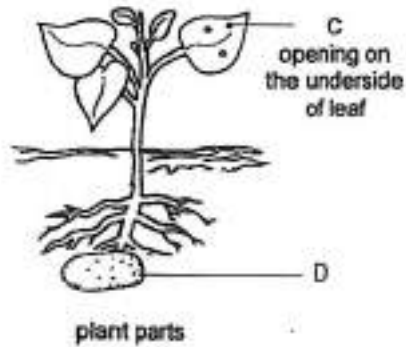
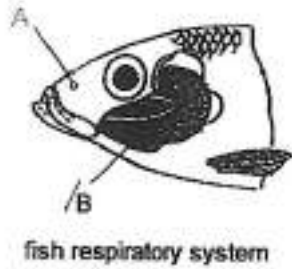
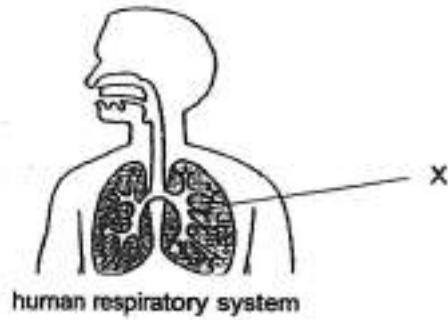
[Remove From Test](#)

Question 17

Primary 5 Science » Primary 5 Science (Term 4)

2 pts

Study the diagrams below carefully.



Which parts of the fish and plant have the same function as X?

- A) A and D only
- B) A and C only
- ✓ C) B and C only
- D) B and D only

Question Type: Multiple Choice
 Randomize Answers: No
 Date Added: Tue 27th Jul 2021
 Last Modified: N/A
 QID#: 28,531,980

[Answers](#) |
 [Edit](#) |
 [Duplicate](#) |
 [Used In](#) |
 [Reorder](#)

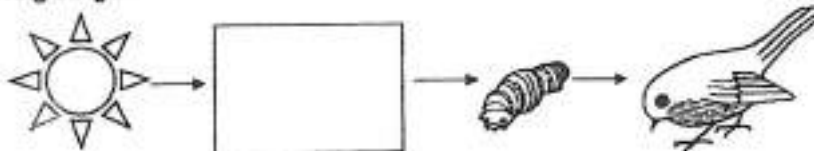
[Remove From Test](#)

Question 18

Primary 5 Science » Primary 5 Science (Term 4)

2 pts

The diagram below shows how energy from the Sun is being transferred to the living things.



Which one of the following living things can be placed in the box?

- A) ant
- B) frog
- ✓ C) grass
- D) mushroom

Question Type: Multiple Choice
Randomize Answers: No
Date Added: Tue 27th Jul 2021
Last Modified: N/A
QID#: 28,531,981

[Answers](#) | [Edit](#) | [Duplicate](#) | [Used In](#) | [Reorder](#)

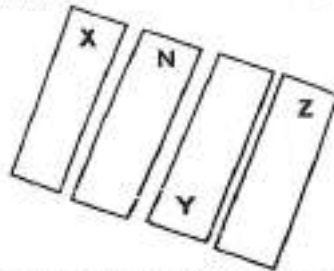
[Remove From Test](#)

Question 19

Primary 5 Science » Primary 5 Science (Term 4)

2 pts

Rusli brought four magnets near each other and observed that they were attracted to each other.



Which of the following correctly identifies poles, X, Y and Z?

A)

Pole X	Pole Y	Pole Z
north	north	south

B)

Pole X	Pole Y	Pole Z
north	south	north

C)

Pole X	Pole Y	Pole Z
south	south	north

✓ D)

Pole X	Pole Y	Pole Z
south	north	north

Question Type: Multiple Choice
Randomize Answers: No
Date Added: Tue 27th Jul 2021
Last Modified: N/A
QID#: 28,531,982

[Answers](#) | [Edit](#) | [Duplicate](#) | [Used In](#) | [Reorder](#)

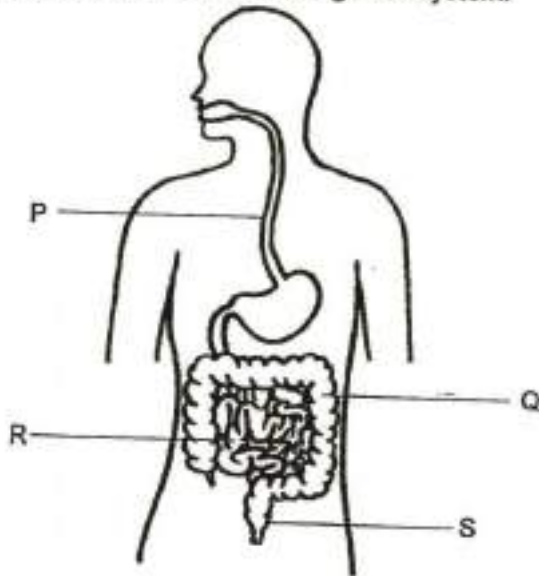
[Remove From Test](#)

Question 20

Primary 5 Science » Primary 5 Science (Term 4)

2 pts

The diagram below shows the human digestive system.



Which one of the following parts does digestion take place in the system?

- A) P
- B) Q
- ✓ C) R
- D) S

Question Type: Multiple Choice
Randomize Answers: No
Date Added: Tue 27th Jul 2021
Last Modified: N/A
QID#: 28,531,983

[Answers](#) | [Edit](#) | [Duplicate](#) | [Used In](#) | [Reorder](#)

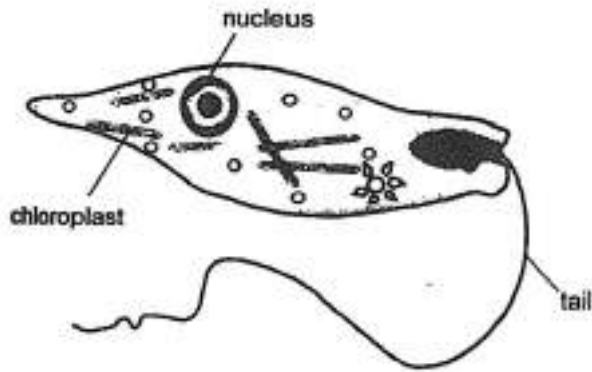
[Remove From Test](#)

Question 21

Primary 5 Science » Primary 5 Science (Term 4)

2 pts

Lilian observed a single-celled organism as shown in the diagram below. She noticed that the organism moved to the surface of the pond only in the day.



Which of the following reason(s) explain(s) why the organism needs to move to the surface of the pond in the day?

- A It needs to trap light for photosynthesis.
- B It needs to take in more oxygen for photosynthesis.
- C It needs to look for food near the surface of the pond.

- ✓ A) A only
- B) C only
- C) A and B only
- D) B and C only

Question Type: Multiple Choice
 Randomize Answers: No
 Date Added: Tue 27th Jul 2021
 Last Modified: N/A
 QID#: 28,531,984

[Answers](#) |
 [Edit](#) |
 [Duplicate](#) |
 [Used In](#) |
 [Reorder](#)

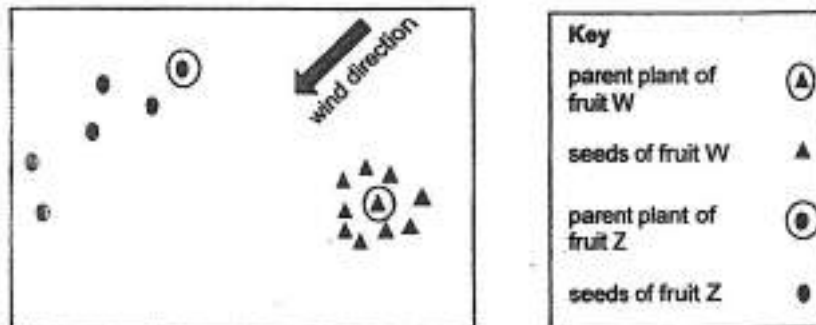
[Remove From Test](#)

Question 22

Primary 5 Science » Primary 5 Science (Term 4)

2 pts

The diagram below shows how the seeds of fruit W and Z are dispersed from the parent plants.



It was observed that all the seeds of fruit Z germinated but only a few seeds of fruit W germinated.

Which one of the following statements explains why some seeds of fruit W did not germinate?

- ✓ A) The seeds did not receive water.
- B) The seeds did not receive fertiliser.
- C) The seeds did not receive carbon dioxide.
- D) The seeds did not receive nutrients, light and space.

Question Type: Multiple Choice
Randomize Answers: No
Date Added: Tue 27th Jul 2021
Last Modified: N/A
QID#: 28,531,985

[Answers](#) | [Edit](#) | [Duplicate](#) | [Used In](#) | [Reorder](#)

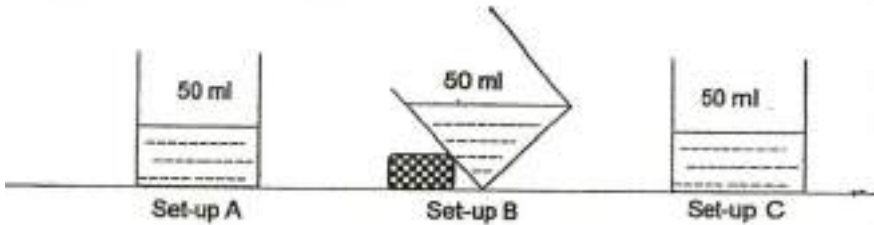
[Remove From Test](#)

Question 23

Primary 5 Science » Primary 5 Science (Term 4)

2 pts

Sally set up an experiment below. She placed set-ups A and B in an open field with direct sunlight and set-up C in a completely dark room. After two days, she measured the amount of water left in the three set-ups.



Which of the following shows the correct order of the set-ups based on the amount of water left after two days?

- A)

Most amount of water left		Least amount of water left
Set-up A	Set-up B	Set-up C
- B)

Most amount of water left		Least amount of water left
Set-up B	Set-up C	Set-up A
- C)

Most amount of water left		Least amount of water left
Set-up C	Set-up B	Set-up A
- ✓ D)

Most amount of water left		Least amount of water left
Set-up C	Set-up A	Set-up B

Question Type: Multiple Choice
Randomize Answers: No
Date Added: Tue 27th Jul 2021
Last Modified: N/A
QID#: 28,531,986

[Answers](#) | [Edit](#) | [Duplicate](#) | [Used In](#) | [Reorder](#)

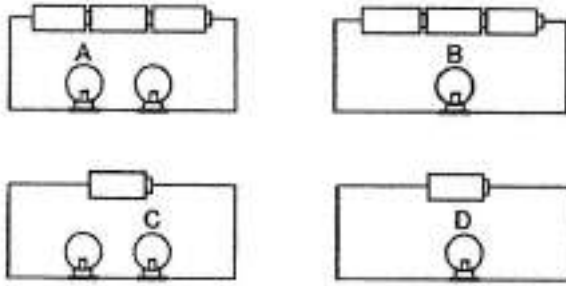
[Remove From Test](#)

Question 24

Primary 5 Science » Primary 5 Science (Term 4)

2 pts

The diagrams below show four circuits.



Which of the following correctly represents the brightness of bulbs A, B, C and D in each circuit?

- A)

Brightest bulb			Dimmest bulb
A	C	B	D
- B)

Brightest bulb			Dimmest bulb
B	D	A	C
- ✓ C)

Brightest bulb			Dimmest bulb
B	A	D	C
- D)

Brightest bulb			Dimmest bulb
C	D	A	B

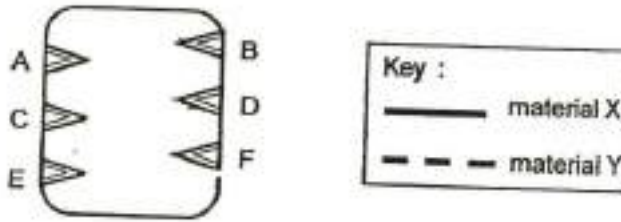
Question Type: Multiple Choice
 Randomize Answers: No
 Date Added: Tue 27th Jul 2021
 Last Modified: N/A
 QID#: 28,531,987

[Answers](#) |
 [Edit](#) |
 [Duplicate](#) |
 [Used In](#) |
 [Reorder](#)
[Remove From Test](#)

Question 25

Primary 5 Science » Primary 5 Science (Term 4) 2 pts

The diagram below shows a circuit card with six paper clips, A to F. The paper clips were connected with material X and Y. Material X is an electrical conductor while material Y is an electrical insulator.



A circuit tester was used to connect to the paper clips on the circuit card and the following observations were recorded in the table below.

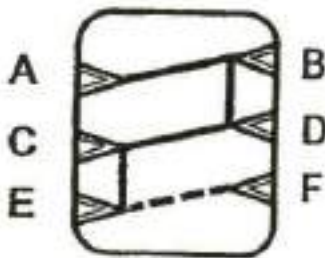
Paper clips connected	Did bulb light up?
A and B	Yes
B and C	Yes
C and D	Yes
D and E	No
E and F	Yes

Which one of the following shows how the paper clips on the circuit card were connected?

A)



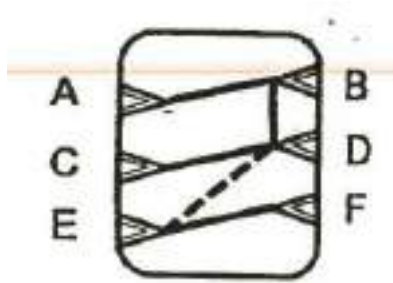
B)



C)



✓ D)



Question Type: Multiple Choice
 Randomize Answers: No
 Date Added: Tue 27th Jul 2021
 Last Modified: N/A
 QID#: 28,531,988

[Answers](#) |
 [Edit](#) |
 [Duplicate](#) |
 [Used In](#) |
 [Reorder](#)

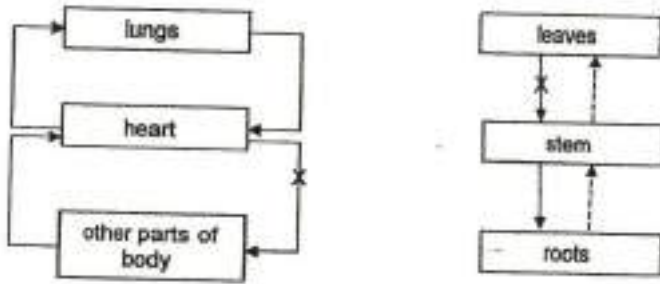
[Remove From Test](#)

Question 26

Primary 5 Science » Primary 5 Science (Term 4)

2 pts

The diagrams below show the circulatory system of a human and the transport system of a plant.



The tubes of the two systems are damaged at the point marked with a "X" as shown above. Which one of the following statements is correct?

- | | | |
|------|---|---|
| A) | Human circulatory system
Only carbon dioxide and oxygen cannot be carried to other parts of the body | Plant transport system
Food cannot be carried to all parts of the plant |
| ✓ B) | Human circulatory system
Carbon dioxide, oxygen, digested food and water cannot be carried to other parts of the body | Plant transport system
Food cannot be carried to all parts of the plant |
| C) | Human circulatory system
Carbon dioxide, oxygen, digested food and water cannot be carried to other parts of the body | Plant transport system
Air and food cannot be carried to all parts of the plant |
| D) | Human circulatory system
Only digested food and water cannot be carried to other parts of the body | Plant transport system
Water cannot be carried to all parts of the plant |

Question Type: Multiple Choice
Randomize Answers: No
Date Added: Tue 27th Jul 2021
Last Modified: N/A
QID#: 28,531,989

[Answers](#) | [Edit](#) | [Duplicate](#) | [Used In](#) | [Reorder](#)

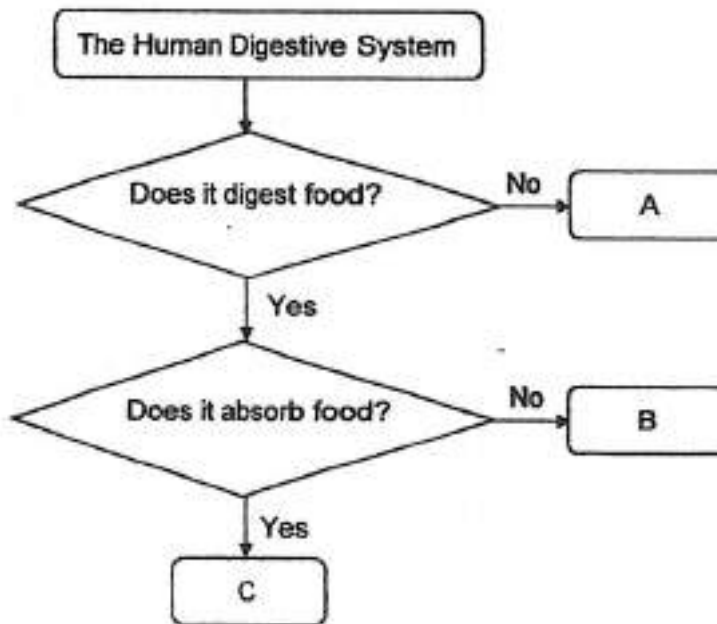
[Remove From Test](#)

Question 27

Primary 5 Science » Primary 5 Science (Term 4)

2 pts

Study the flowchart below.



Which of the following correctly represent parts A, B and C?

- A)

A	B	C
gullet	mouth	stomach
- B)

A	B	C
mouth	small intestine	large intestine
- C)

A	B	C
small intestine	large intestine	stomach
- ✓ D)

A	B	C
large intestine	stomach	small intestine

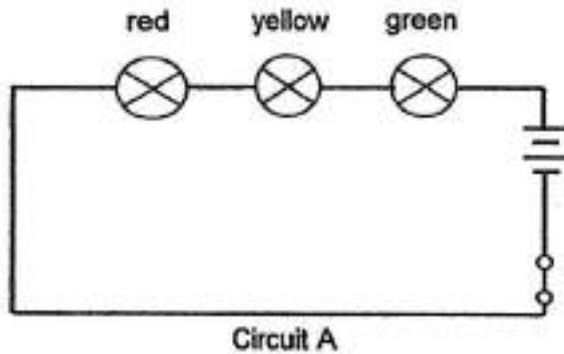
Question Type: Multiple Choice
Randomize Answers: No
Date Added: Tue 27th Jul 2021
Last Modified: N/A
QID#: 28,531,991

Question 28

Primary 5 Science » Primary 5 Science (Term 4)

0 pts

The circuit diagram below shows a switch and three coloured bulbs.



Explain clearly why the bulbs cannot change from red to yellow and then to green, similar to the traffic lights. (1 mark)

This question is designed for extended answers that parent/ teacher will have to assign and guide child to attempt after the test has been completed.

Grading: This question type is not graded on this system and will not affect the final score as it was designed in such a way that it requires manual assistance.

Question Type: Essay
Date Added: Tue 27th Jul 2021
Last Modified: N/A
QID#: 28,532,000

Correctly answered feedback

They are arranged in series. In a series circuit, all the bulbs will light up at the same time and all the bulbs will not light up together as there is only 1 path of electricity.

Incorrectly answered feedback

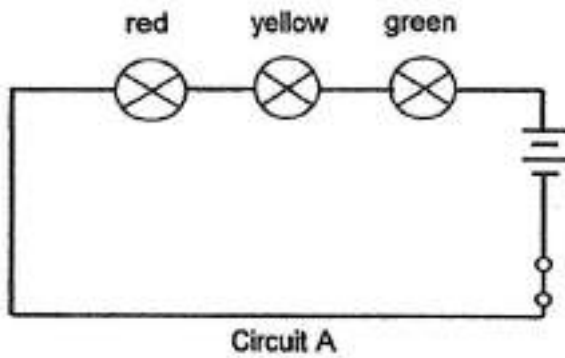
They are arranged in series. In a series circuit, all the bulbs will light up at the same time and all the bulbs will not light up together as there is only 1 path of electricity.

Question 29

Primary 5 Science » Primary 5 Science (Term 4)

0 pts

The circuit diagram below shows a switch and three coloured bulbs.



When one more bulb is added in series to circuit A, what will happen to the brightness of the existing bulbs? (1 mark)

This question is designed for extended answers that parent/ teacher will have to assign and guide child to attempt after the test has been completed.

Grading: This question type is not graded on this system and will not affect the final score as it was designed in such a way that it requires manual assistance.

Question Type: Essay
Date Added: Tue 27th Jul 2021
Last Modified: N/A
QID#: 28,532,001

Correctly answered feedback

The brightness of the bulbs will decrease.

Incorrectly answered feedback

The brightness of the bulbs will decrease.

[Answers](#) | [Edit](#) | [Duplicate](#) | [Used In](#) | [Reorder](#)

[Remove From Test](#)

Question 30

Primary 5 Science » Primary 5 Science (Term 4)

0 pts

Weiming put some chicken meat into a pot of water to make chicken soup. When the soup boiled, he used a ladle to scoop up the soup but he realised that he was not able to see the soup clearly with his glasses.



Weiming continued to boil and stir the soup for another 10 minutes. He observed that less of the substance in the previous question was formed on his glasses. Give a reason for his observation. (1

mark)

This question is designed for extended answers that parent/ teacher will have to assign and guide child to attempt after the test has been completed.

Grading: This question type is not graded on this system and will not affect the final score as it was designed in such a way that it requires manual assistance.

Question Type: Essay
Date Added: Tue 27th Jul 2021
Last Modified: N/A
QID#: 28,532,002

Correctly answered feedback

The glasses would gain heat from the steam and become warmer and condensation took place.

Incorrectly answered feedback

The glasses would gain heat from the steam and become warmer and condensation took place.

[Answers](#) |
 [Edit](#) |
 [Duplicate](#) |
 [Used In](#) |
 [Reorder](#)

[Remove From Test](#)

Question 31

Primary 5 Science » Primary 5 Science (Term 4)

1 pt

Weiming put some chicken meat into a pot of water to make chicken soup. When the soup boiled, he used a ladle to scoop up the soup but he realised that he was not able to see the soup clearly with his glasses.



What substance had formed on his glasses to prevent him from seeing clearly?

Accepted answers:

✓ Water vapour

Question Type: Free Text
 Date Added: Tue 27th Jul 2021
 Last Modified: N/A
 QID#: 28,532,026

Answers | Edit | Duplicate | Used In | Reorder

Remove From Test

Question 32

Primary 5 Science » Primary 5 Science (Term 4)

0 pts

Weiming put some chicken meat into a pot of water to make chicken soup. When the soup boiled, he used a ladle to scoop up the soup but he realised that he was not able to see the soup clearly with his glasses.



What would happen to the volume of the soup after Weiming continued to boil the soup for another 10 minutes? Explain your answer. (2 marks)

This question is designed for extended answers that parent/ teacher will have to assign and guide child to attempt after the test has been completed.

Grading: This question type is not graded on this system and will not affect the final score as it was designed in such a way that it requires manual assistance.

Question Type: Essay
 Date Added: Tue 27th Jul 2021
 Last Modified: N/A
 QID#: 28,532,003

Correctly answered feedback

The volume of the soup would decreased. The water from the soup would gain heat and change to steam.

Incorrectly answered feedback

The volume of the soup would decreased. The water from the soup would gain heat and change to steam.

Answers | Edit | Duplicate | Used In | Reorder

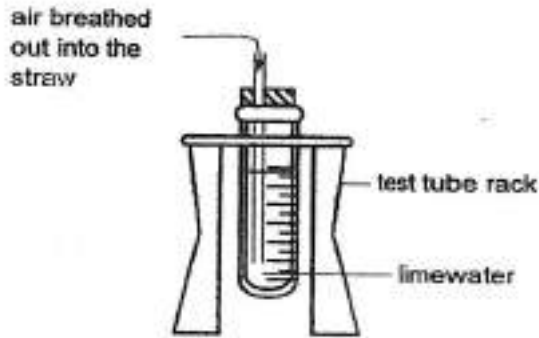
Remove From Test

Question 33

Primary 5 Science » Primary 5 Science (Term 4)

1 pt

The diagram below shows a test tube filled with some limewater. Limewater turns chalky when it interacts with carbon dioxide.



Besides nitrogen and carbon dioxide, name 2 other gases that can be found in the air that is breathed out into the test tube. (1 mark)

Accepted answers:

- ✓ Water vapour and oxygen
- ✓ oxygen and water vapour

Question Type: Free Text
Date Added: Tue 27th Jul 2021
Last Modified: N/A
QID#: 28,532,027

[Answers](#) | [Edit](#) | [Duplicate](#) | [Used In](#) | [Reorder](#)

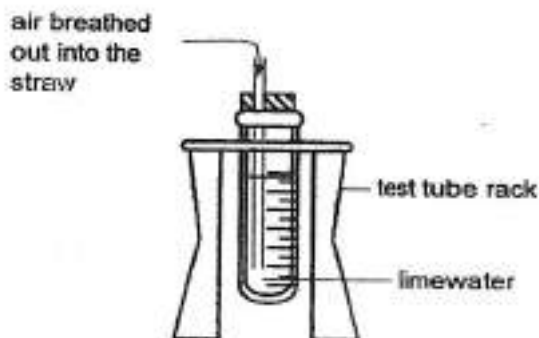
[Remove From Test](#)

Question 34

Primary 5 Science » Primary 5 Science (Term 4)

0 pts

The diagram below shows a test tube filled with some limewater. Limewater turns chalky when it interacts with carbon dioxide.



After breathing out into the straw several times, the limewater in the test tube turned chalky. Explain why. (1 mark)

This question is designed for extended answers that parent/ teacher will have to assign and guide child to attempt after the test has been completed.

Grading: This question type is not graded on this system and will not affect the final score as it was designed in such a way that it requires manual assistance.

Question Type: Essay
Date Added: Tue 27th Jul 2021

Last Modified: N/A
QID#: 28,532,004

Correctly answered feedback

The air we breathe out contains carbon dioxide. When the limewater in the test tube gets into contact with carbon dioxide, it will turn chalky.

Incorrectly answered feedback

The air we breathe out contains carbon dioxide. When the limewater in the test tube gets into contact with carbon dioxide, it will turn chalky.

Answers | Edit | Duplicate | Used In | Reorder

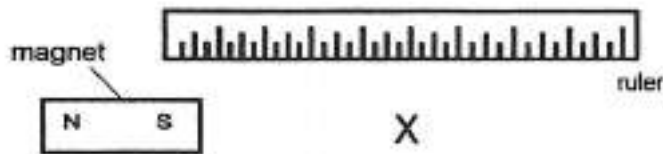
Remove From Test

Question 35

Primary 5 Science » Primary 5 Science (Term 4)

0 pts

Mrs Lee conducted an experiment with the set-up below. She placed two blocks made of different materials at the position marked 'X' and observed the interaction between the blocks and the magnet.



She recorded her observations in the table below.

Block	Observations
A	did not move
B	moved towards the magnet

Other than the shape and colour of the blocks, suggest two variables about the blocks that Lina has to keep constant to ensure a fair test. (2 marks)

This question is designed for extended answers that parent/ teacher will have to assign and guide child to attempt after the test has been completed.

Grading: This question type is not graded on this system and will not affect the final score as it was designed in such a way that it requires manual assistance.

Question Type: Essay
Date Added: Tue 27th Jul 2021
Last Modified: N/A
QID#: 28,532,005

Correctly answered feedback

The size of the blocks and the weight of the blocks.

Incorrectly answered feedback

The size of the blocks and the weight of the blocks.

[Answers](#) | [Edit](#) | [Duplicate](#) | [Used In](#) | [Reorder](#)

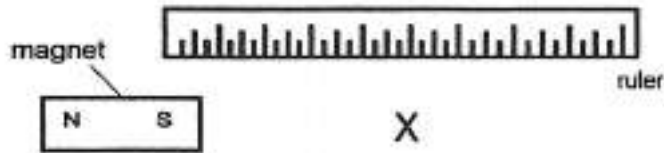
[Remove From Test](#)

Question 36

Primary 5 Science » Primary 5 Science (Term 4)

0 pts

Mrs Lee conducted an experiment with the set-up below. She placed two blocks made of different materials at the position marked 'X' and observed the interaction between the blocks and the magnet.



She recorded her observations in the table below.

Block	Observations
A	did not move
B	moved towards the magnet

Based on the observations, Mrs Lee concluded that block B is definitely a magnet. Do you agree with her? Explain your answer. (2 marks)

This question is designed for extended answers that parent/ teacher will have to assign and guide child to attempt after the test has been completed.

Grading: This question type is not graded on this system and will not affect the final score as it was designed in such a way that it requires manual assistance.

Question Type: Essay
Date Added: Tue 27th Jul 2021
Last Modified: N/A
QID#: 28,532,006

Correctly answered feedback

I do not agree with Mrs Lee as Block B could just be a magnetic material as no repulsion was observed.

Incorrectly answered feedback

I do not agree with Mrs Lee as Block B could just be a magnetic material as no repulsion was observed.

[Answers](#) | [Edit](#) | [Duplicate](#) | [Used In](#) | [Reorder](#)

[Remove From Test](#)

Question 37

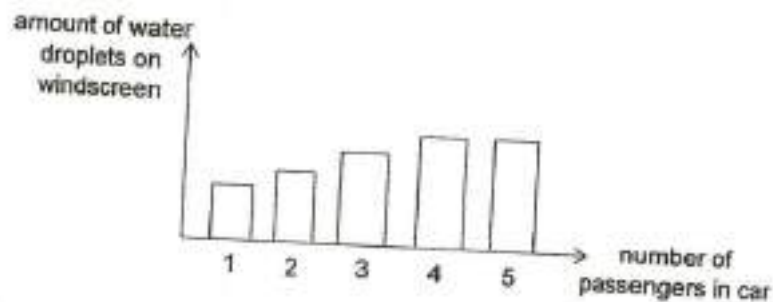
Primary 5 Science » Primary 5 Science (Term 4)

0 pts

The diagram below shows a car in a thunderstorm.



After some time in the thunderstorm, the windscreen inside the car started to have water droplets, even though no rain could get inside the car. It was also observed that the number of passengers affect the amount of water droplets formed on the windscreen.



What is the relationship between the number of passengers in the car and the amount of water droplets on the windscreen? (1 mark)

This question is designed for extended answers that parent/ teacher will have to assign and guide child to attempt after the test has been completed.

Grading: This question type is not graded on this system and will not affect the final score as it was designed in such a way that it requires manual assistance.

Question Type: Essay
Date Added: Tue 27th Jul 2021
Last Modified: N/A
QID#: 28,532,009

Correctly answered feedback

As the number of passengers increased beyond 4 passengers, the amount of water droplets remained the same.

Incorrectly answered feedback

As the number of passengers increased beyond 4 passengers, the amount of water droplets remained the same.

[Answers](#) | [Edit](#) | [Duplicate](#) | [Used In](#) | [Reorder](#)

[Remove From Test](#)

Question 38

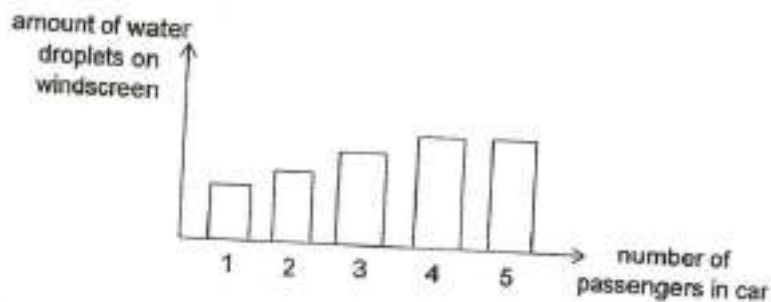
Primary 5 Science » Primary 5 Science (Term 4)

0 pts

The diagram below shows a car in a thunderstorm.



After some time in the thunderstorm, the windscreen inside the car started to have water droplets, even though no rain could get inside the car. It was also observed that the number of passengers affect the amount of water droplets formed on the windscreen.



Explain the relationship between the amount of water droplets formed on the windscreen and the number of passengers in the car up to 4 passengers. (2 marks)

This question is designed for extended answers that parent/ teacher will have to assign and guide child to attempt after the test has been completed.

Grading: This question type is not graded on this system and will not affect the final score as it was designed in such a way that it requires manual assistance.

Question Type: Essay
 Date Added: Tue 27th Jul 2021
 Last Modified: N/A
 QID#: 28,532,011

Correctly answered feedback

**More passengers in the car will give out more water vapour.
 More water vapour will lose heat to the cooler inner surface of the windscreen and condense into more water droplets.**

Incorrectly answered feedback

**More passengers in the car will give out more water vapour.
 More water vapour will lose heat to the cooler inner surface of the windscreen and condense into more water droplets.**

[Answers](#) | [Edit](#) | [Duplicate](#) | [Used In](#) | [Reorder](#)

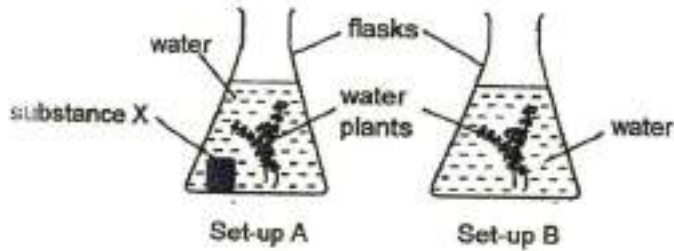
[Remove From Test](#)

Question 39

Primary 5 Science » Primary 5 Science (Term 4)

0 pts

Kelly set up an experiment as shown below. She wanted to find out if substance X would affect the rate of photosynthesis of the water plants. She put the two set-ups near a window with light.



Identify the independent variable (changed variable) in the experiment. (1 mark)

This question is designed for extended answers that parent/ teacher will have to assign and guide child to attempt after the test has been completed.

Grading: This question type is not graded on this system and will not affect the final score as it was designed in such a way that it requires manual assistance.

Question Type: Essay
Date Added: Tue 27th Jul 2021
Last Modified: N/A
QID#: 28,532,007

Correctly answered feedback

The presence of substance X.

Incorrectly answered feedback

The presence of substance X.

[Answers](#) | [Edit](#) | [Duplicate](#) | [Used In](#) | [Reorder](#)

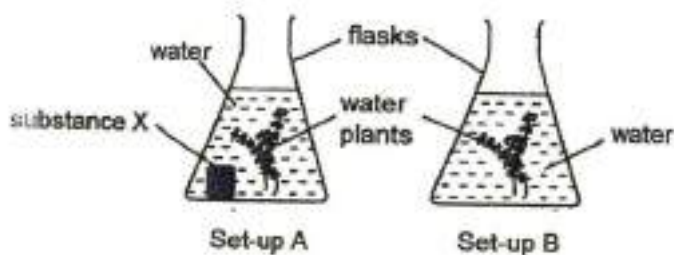
[Remove From Test](#)

Question 40

Primary 5 Science » Primary 5 Science (Term 4)

0 pts

Kelly set up an experiment as shown below. She wanted to find out if substance X would affect the rate of photosynthesis of the water plants. She put the two set-ups near a window with light.



What results could lead Kelly to conclude that substance X increases the rate of photosynthesis of the water plants? (1 mark)

This question is designed for extended answers that parent/ teacher will have to assign and guide child to attempt after the test has been completed.

Grading: This question type is not graded on this system and will not affect the final score as it was designed in such a way that it requires manual assistance.

Question Type: Essay
Date Added: Tue 27th Jul 2021
Last Modified: N/A
QID#: 28,532,010

Correctly answered feedback

She should observe that there are more bubbles in set-up A than set-up B.

Incorrectly answered feedback

She should observe that there are more bubbles in set-up A than set-up B.

[Answers](#) | [Edit](#) | [Duplicate](#) | [Used In](#) | [Reorder](#)

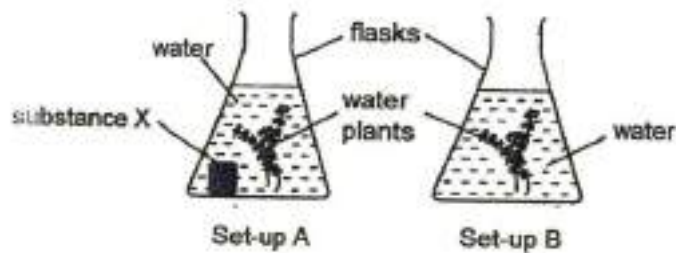
[Remove From Test](#)

Question 41

Primary 5 Science » Primary 5 Science (Term 4)

1 pt

Kelly set up an experiment as shown below. She wanted to find out if substance X would affect the rate of photosynthesis of the water plants. She put the two set-ups near a window with light.



What would Kelly observe if photosynthesis was taking place in the two set-ups?

Accepted answers:

✓ Oxygen bubbles

Question Type: Free Text
Date Added: Tue 27th Jul 2021
Last Modified: N/A
QID#: 28,532,029

[Answers](#) | [Edit](#) | [Duplicate](#) | [Used In](#) | [Reorder](#)

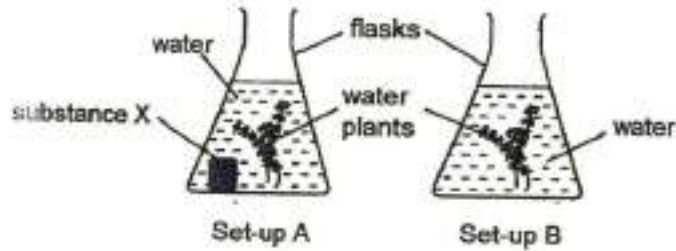
[Remove From Test](#)

Question 42

Primary 5 Science » Primary 5 Science (Term 4)

0 pts

Kelly set up an experiment as shown below. She wanted to find out if substance X would affect the rate of photosynthesis of the water plants. She put the two set-ups near a window with light.



Suggest two changes that Kelly can make to set-up A if she wants to find out if light is needed for photosynthesis. (1 mark)

This question is designed for extended answers that parent/ teacher will have to assign and guide child to attempt after the test has been completed.

Grading: This question type is not graded on this system and will not affect the final score as it was designed in such a way that it requires manual assistance.

Question Type: Essay
 Date Added: Tue 27th Jul 2021
 Last Modified: N/A
 QID#: 28,532,012

Correctly answered feedback

Remove substance X and place the set-up B in a dark room and set-up A under the sun.

Incorrectly answered feedback

Remove substance X and place the set-up B in a dark room and set-up A under the sun.

[Answers](#) | [Edit](#) | [Duplicate](#) | [Used In](#) | [Reorder](#)

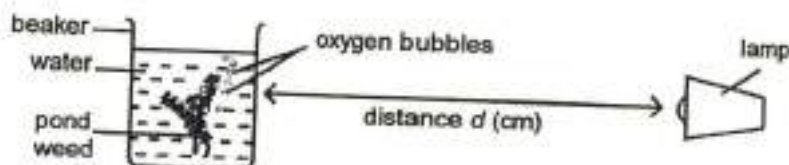
[Remove From Test](#)

Question 43

Primary 5 Science » Primary 5 Science (Term 4)

2 pts

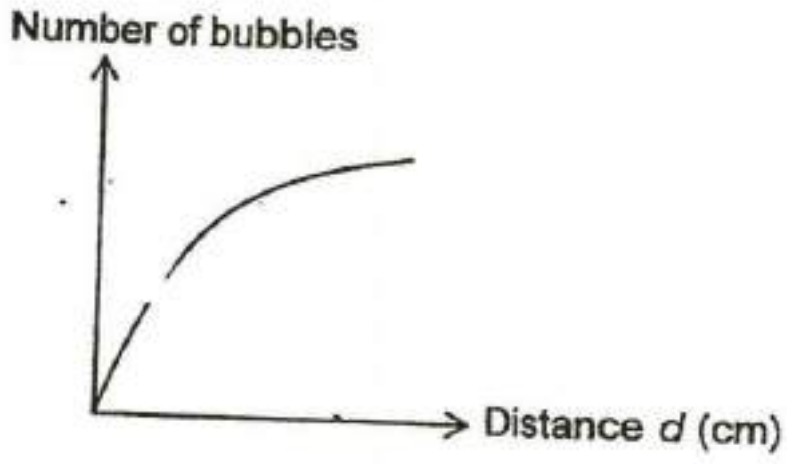
Tom conducted an experiment using the set-up below. He kept all the variables constant except the distance between the beaker and the lamp.



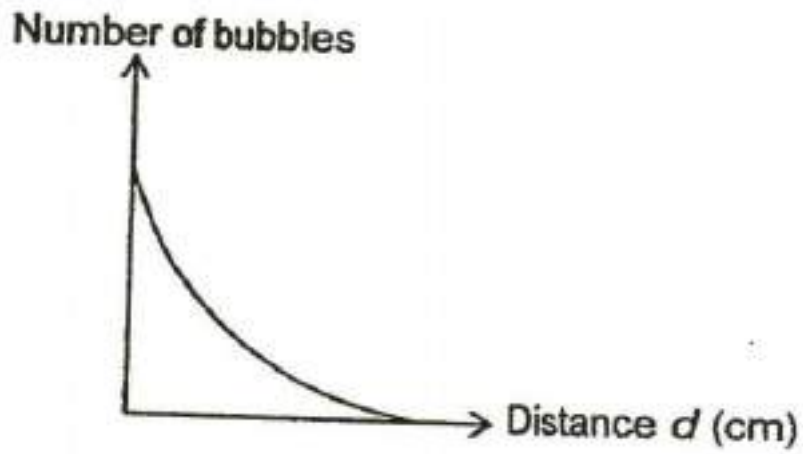
He counted the number of bubbles produced for five minutes. He repeated the experiment at different distances, d .

Which one of the following graphs most likely shows the results of Tom's experiment?

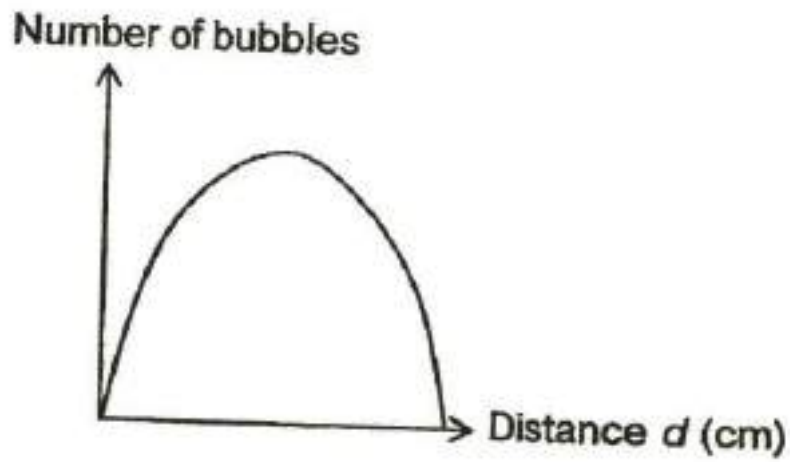
A)



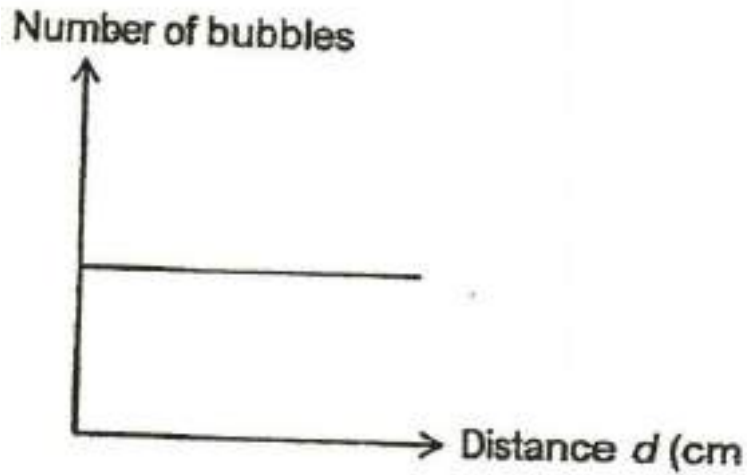
✓ B)



C)



D)



Question Type: Multiple Choice
Randomize Answers: No
Date Added: Tue 27th Jul 2021
Last Modified: N/A
QID#: 28,531,990

[Answers](#) | [Edit](#) | [Duplicate](#) | [Used In](#) | [Reorder](#)

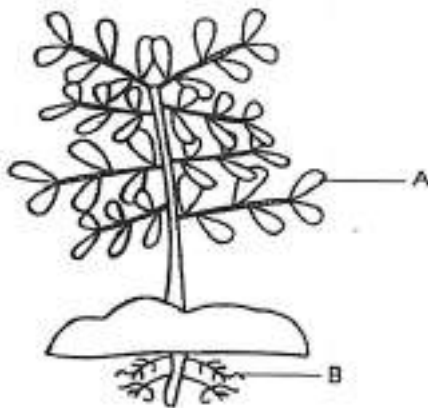
[Remove From Test](#)

Question 44

Primary 5 Science » Primary 5 Science (Term 4)

0 pts

Jim prepared specimens of cell X and cell Y. Cell X is taken from part A of the plant and cell Y is taken from part B of the plant. He used an apparatus to observe the cells.



State one difference between cells X and Y that Jim would observe. (Do not mention colour or size.) (1 mark)

This question is designed for extended answers that parent/ teacher will have to assign and guide child to attempt after the test has been completed.

Grading: This question type is not graded on this system and will not affect the final score as it was designed in such a way that it requires manual assistance.

Question Type: Essay
Date Added: Tue 27th Jul 2021
Last Modified: N/A
QID#: 28,532,013

Correctly answered feedback

Cell X would have chloroplasts but cell Y would not.

Incorrectly answered feedback

Cell X would have chloroplasts but cell Y would not.

[Answers](#) | [Edit](#) | [Duplicate](#) | [Used In](#) | [Reorder](#)

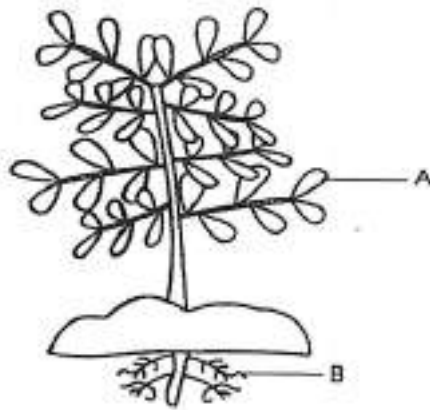
[Remove From Test](#)

Question 45

Primary 5 Science » Primary 5 Science (Term 4)

0 pts

Jim prepared specimens of cell X and cell Y. Cell X is taken from part A of the plant and cell Y is taken from part B of the plant. He used an apparatus to observe the cells.



Explain your answer in the previous question. (1 mark)

This question is designed for extended answers that parent/ teacher will have to assign and guide child to attempt after the test has been completed.

Grading: This question type is not graded on this system and will not affect the final score as it was designed in such a way that it requires manual assistance.

Question Type: Essay
 Date Added: Tue 27th Jul 2021
 Last Modified: N/A
 QID#: 28,532,014

Correctly answered feedback

As cell X is found in the leaves, it contains chloroplasts that contain chlorophyll which is a green pigment that traps sunlight for photosynthesis. The roots do not need to make food for the plant so they do not contain chloroplasts.

Incorrectly answered feedback

As cell X is found in the leaves, it contains chloroplasts that contain chlorophyll which is a green pigment that traps sunlight for photosynthesis. The roots do not need to make food for the plant so they do not contain chloroplasts.

[Answers](#) | [Edit](#) | [Duplicate](#) | [Used In](#) | [Reorder](#)

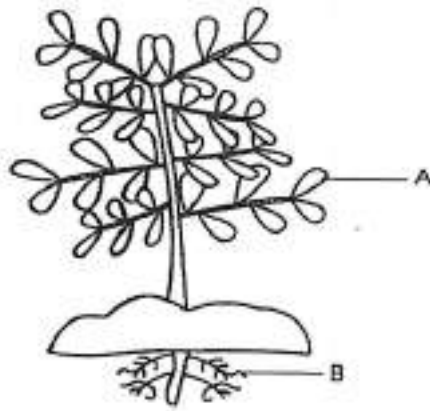
[Remove From Test](#)

Question 46

Primary 5 Science » Primary 5 Science (Term 4)

1 pt

Jim prepared specimens of cell X and cell Y. Cell X is taken from part A of the plant and cell Y is taken from part B of the plant. He used an apparatus to observe the cells.



What apparatus was used to observe the cells? (1 mark)

Accepted answers:

- ✓ A microscope
- ✓ microscope

Question Type: Free Text
Date Added: Tue 27th Jul 2021
Last Modified: N/A
QID#: 28,532,031

[Answers](#) | [Edit](#) | [Duplicate](#) | [Used In](#) | [Reorder](#)

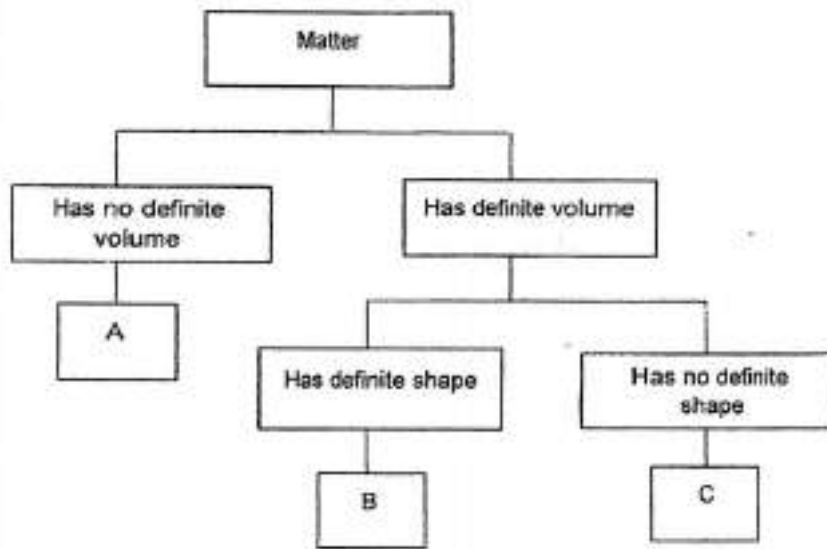
[Remove From Test](#)

Question 47

Primary 5 Science » Primary 5 Science (Term 4)

0 pts

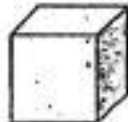
Study the flow chart below.



Sumin has a wooden cube, a sponge cube and a glass cylinder.



wooden cube



sponge cube



glass cylinder

Sumin cannot squeeze the wooden cube into the glass cylinder but can squeeze the sponge cube into the glass cylinder. Explain why this is so. [2]

This question is designed for extended answers that parent/ teacher will have to assign and guide child to attempt after the test has been completed.

Grading: This question type is not graded on this system and will not affect the final score as it was designed in such a way that it requires manual assistance.

Question Type: Essay
 Date Added: Tue 27th Jul 2021
 Last Modified: N/A
 QID#: 28,532,015

Correctly answered feedback

The wooden cube has a definite volume and cannot be compressed so it cannot be squeezed into the cylinder.

Incorrectly answered feedback

The wooden cube has a definite volume and cannot be compressed so it cannot be squeezed into the cylinder.

[Answers](#) | [Edit](#) | [Duplicate](#) | [Used In](#) | [Reorder](#)

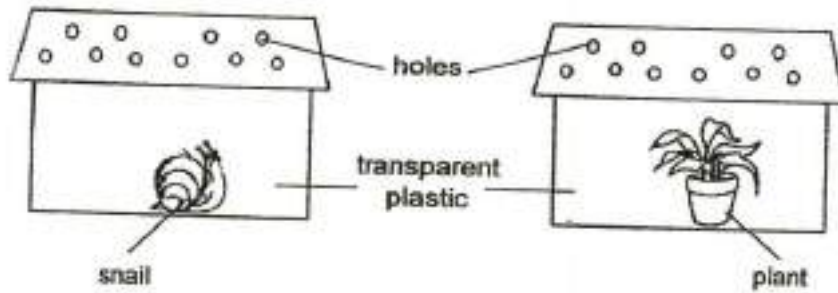
[Remove From Test](#)

Question 48

Primary 5 Science » Primary 5 Science (Term 4)

0 pts

Jane kept two living things in two similar containers and gave each of them enough water daily. She placed both containers in an open space with light.



What do the two living things need to carry out life processes? (1 mark)

This question is designed for extended answers that parent/ teacher will have to assign and guide child to attempt after the test has been completed.

Grading: This question type is not graded on this system and will not affect the final score as it was designed in such a way that it requires manual assistance.

Question Type: Essay
Date Added: Tue 27th Jul 2021
Last Modified: N/A
QID#: 28,532,016

Correctly answered feedback

They need air, food and water.

Incorrectly answered feedback

They need air, food and water.

[Answers](#) | [Edit](#) | [Duplicate](#) | [Used In](#) | [Reorder](#)

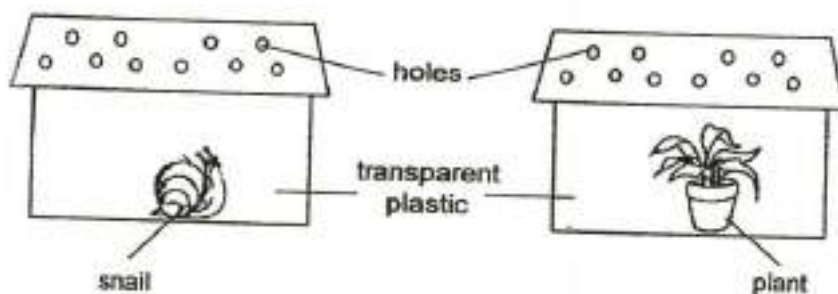
[Remove From Test](#)

Question 49

Primary 5 Science » Primary 5 Science (Term 4)

0 pts

Jane kept two living things in two similar containers and gave each of them enough water daily. She placed both containers in an open space with light.



Which living thing will most likely survive for a longer period of time? Explain your answer. (2 marks)

This question is designed for extended answers that parent/ teacher will have to assign and guide child to attempt after the test has been completed.

Grading: This question type is not graded on this system and will not affect the final score as it was designed in such a way that it requires manual assistance.

Question Type: Essay
Date Added: Tue 27th Jul 2021
Last Modified: N/A
QID#: 28,532,018

Correctly answered feedback

The plant can survive longer as it can make food in the presence of light, water and carbon dioxide.

Incorrectly answered feedback

The plant can survive longer as it can make food in the presence of light, water and carbon dioxide.

[Answers](#) | [Edit](#) | [Duplicate](#) | [Used In](#) | [Reorder](#)

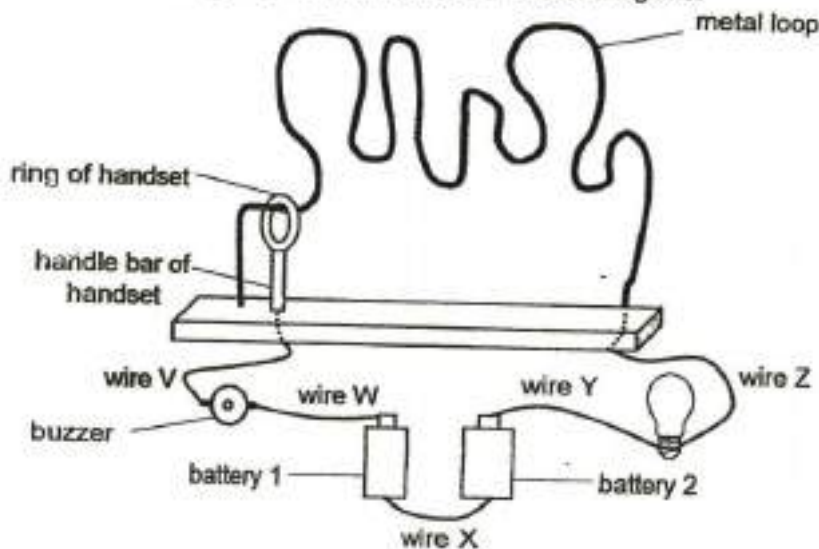
[Remove From Test](#)

Question 50

Primary 5 Science » Primary 5 Science (Term 4)

0 pts

Sally set up a metal loop game as shown in the diagram below. The player has to move the handset along the metal loop from one end to the other end. When the ring of the handset touches the metal loop, the buzzer will sound and the bulb will light up. Then the player has lost the game.



In order to play the game, what property should the materials used to make the ring of the handset have? Explain your answer. (2 marks)

This question is designed for extended answers that parent/ teacher will have to assign and guide child to attempt after the test has been completed.

Grading: This question type is not graded on this system and will not affect the final score as it was designed in such a way that it requires manual assistance.

Question Type: Essay
Date Added: Tue 27th Jul 2021
Last Modified: N/A
QID#: 28,532,019

Correctly answered feedback

It should be a conductor of electricity. If the ring is an insulator of electricity, even if the ring touches the metal loop, the circuit will not be a closed one and the buzzer and the bulb will not sound and light up.

Incorrectly answered feedback

It should be a conductor of electricity. If the ring is an insulator of electricity, even if the ring touches the metal loop, the circuit will not be a closed one and the buzzer and the bulb will not sound and light up.

Answers | Edit | Duplicate | Used In | Reorder

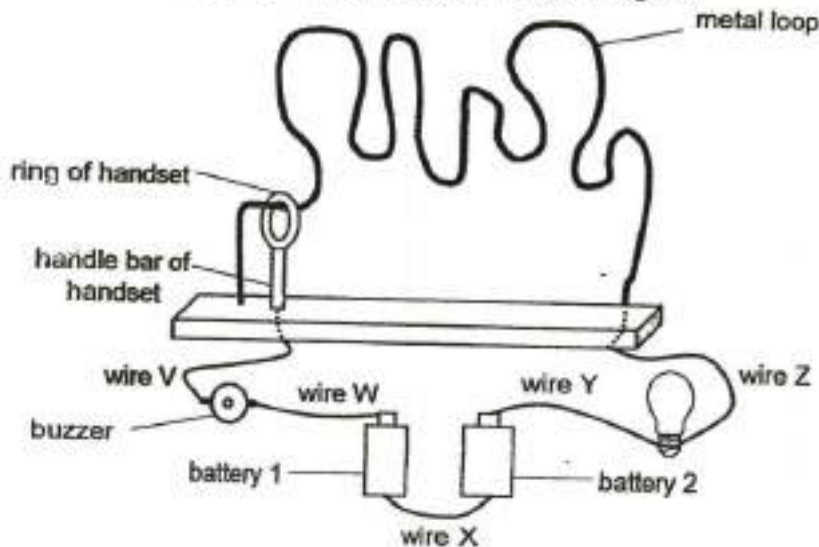
Remove From Test

Question 51

Primary 5 Science » Primary 5 Science (Term 4)

0 pts

Sally set up a metal loop game as shown in the diagram below. The player has to move the handset along the metal loop from one end to the other end. When the ring of the handset touches the metal loop, the buzzer will sound and the bulb will light up. Then the player has lost the game.



State two reasons why the metal loop game will not work as intended. (2 marks)

This question is designed for extended answers that parent/ teacher will have to assign and guide child to attempt after the test has been completed.

Grading: This question type is not graded on this system and will not affect the final score as it was designed in such a way that it requires manual assistance.

Question Type: Essay
 Date Added: Tue 27th Jul 2021
 Last Modified: N/A
 QID#: 28,532,017

Correctly answered feedback

Reason 1: The batteries are connected wrongly.
Reason 2: Wire Z is not connected to the metal tip of the bulb.

Incorrectly answered feedback

Reason 1: The batteries are connected wrongly.
Reason 2: Wire Z is not connected to the metal tip of the bulb.

[Answers](#) |
 [Edit](#) |
 [Duplicate](#) |
 [Used In](#) |
 [Reorder](#)

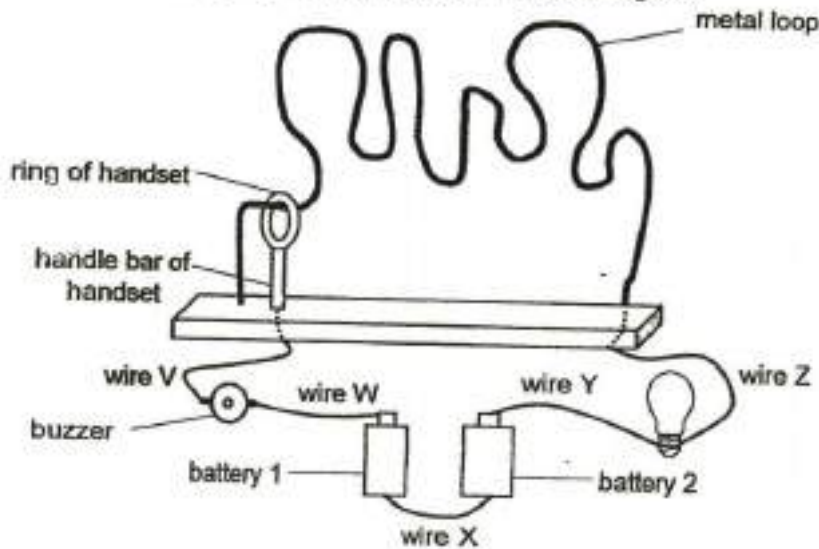
[Remove From Test](#)

Question 52

Primary 5 Science » Primary 5 Science (Term 4)

0 pts

Sally set up a metal loop game as shown in the diagram below. The player has to move the handset along the metal loop from one end to the other end. When the ring of the handset touches the metal loop, the buzzer will sound and the bulb will light up. Then the player has lost the game.



Without changing the metal loop, suggest a change to the set-up that will make it more difficult to win the game. (1 mark)

This question is designed for extended answers that parent/ teacher will have to assign and guide child to attempt after the test has been completed.

Grading: This question type is not graded on this system and will not affect the final score as it was designed in such a way that it requires manual assistance.

Question Type: Essay
Date Added: Tue 27th Jul 2021
Last Modified: N/A
QID#: 28,532,021

Correctly answered feedback

Make the hole in the ring smaller.

Incorrectly answered feedback

Make the hole in the ring smaller.

[Answers](#) |
 [Edit](#) |
 [Duplicate](#) |
 [Used In](#) |
 [Reorder](#)

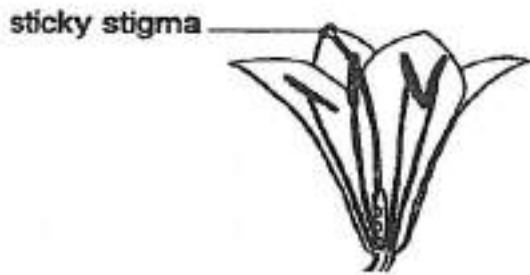
[Remove From Test](#)

Question 53

Primary 5 Science » Primary 5 Science (Term 4)

0 pts

The diagram below shows flower X which has a sticky stigma.



What is the advantage of having a sticky stigma in the process of pollination? (1 mark)

This question is designed for extended answers that parent/ teacher will have to assign and guide child to attempt after the test has been completed.

Grading: This question type is not graded on this system and will not affect the final score as it was designed in such a way that it requires manual assistance.

Question Type: Essay
Date Added: Tue 27th Jul 2021
Last Modified: N/A
QID#: 28,532,020

Correctly answered feedback

The pollen grain will stick on the stigma better, so there is a higher chance of pollination.

Incorrectly answered feedback

The pollen grain will stick on the stigma better, so there is a higher chance of pollination.

[Answers](#) |
 [Edit](#) |
 [Duplicate](#) |
 [Used In](#) |
 [Reorder](#)

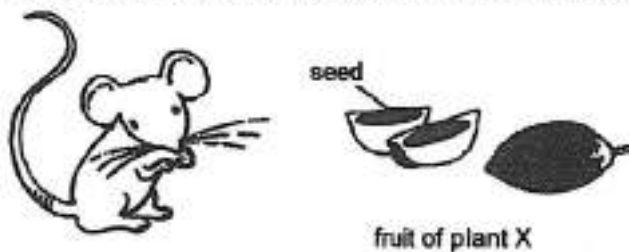
[Remove From Test](#)

Question 54

Primary 5 Science » Primary 5 Science (Term 4)

0 pts

The fruit of plant X is juicy and contains seeds that are hard and stone-like.



Describe how the seeds of plant X can be dispersed by the mouse. (1 mark)

This question is designed for extended answers that parent/ teacher will have to assign and guide child to attempt after the test has been completed.

Grading: This question type is not graded on this system and will not affect the final score as it was designed in such a way that it requires manual assistance.

Question Type: Essay

Date Added: Tue 27th Jul 2021
 Last Modified: N/A
 QID#: 28,532,022

Correctly answered feedback

The mouse would eat the juicy flesh of the fruit and leave the seed there.

Incorrectly answered feedback

The mouse would eat the juicy flesh of the fruit and leave the seed there.

[Answers](#) | [Edit](#) | [Duplicate](#) | [Used In](#) | [Reorder](#)

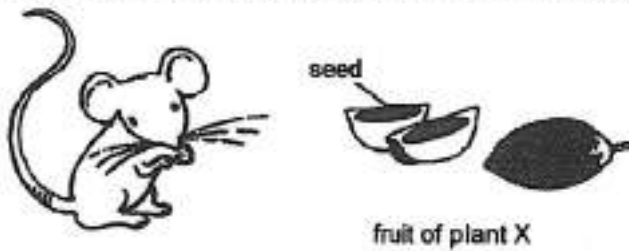
[Remove From Test](#)

Question 55

Primary 5 Science » Primary 5 Science (Term 4)

0 pts

The fruit of plant X is juicy and contains seeds that are hard and stone-like.



Why is it important for seeds to be dispersed away from the parent plant? (1 mark)

This question is designed for extended answers that parent/ teacher will have to assign and guide child to attempt after the test has been completed.

Grading: This question type is not graded on this system and will not affect the final score as it was designed in such a way that it requires manual assistance.

Question Type: Essay
 Date Added: Tue 27th Jul 2021
 Last Modified: N/A
 QID#: 28,532,023

Correctly answered feedback

So that the seedlings will not need to compete for sunlight, space, mineral salts and water.

Incorrectly answered feedback

So that the seedlings will not need to compete for sunlight, space, mineral salts and water.

[Answers](#) | [Edit](#) | [Duplicate](#) | [Used In](#) | [Reorder](#)

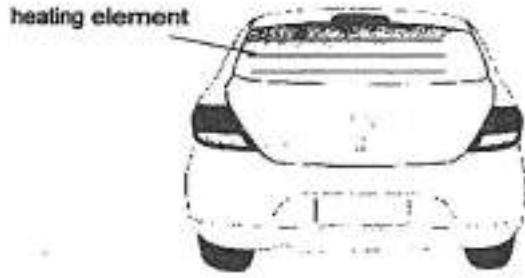
[Remove From Test](#)

Question 56

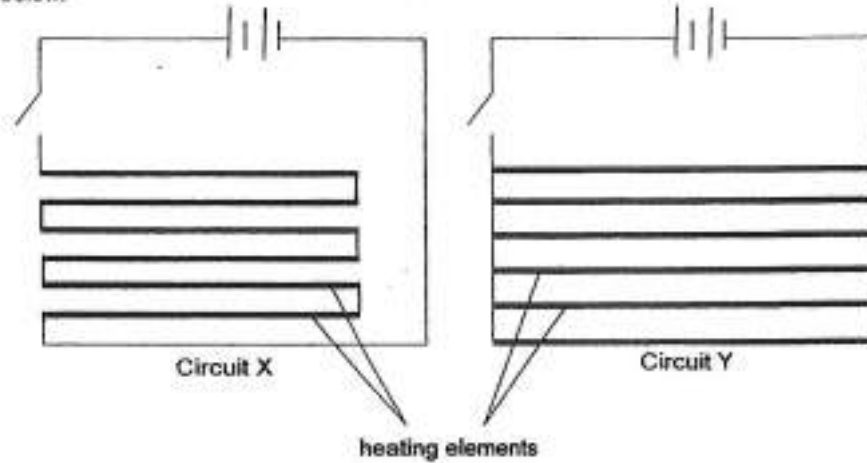
Primary 5 Science » Primary 5 Science (Term 4)

0 pts

In cold countries, the back window of a car usually contains heating elements. The heating elements are part of an electrical circuit connected to the battery of the car.



There are two ways of connecting the heating elements in a circuit as shown below.



What is the advantage of using circuit Y when one of the heating elements is broken? Explain your answer. (2 marks)

This question is designed for extended answers that parent/ teacher will have to assign and guide child to attempt after the test has been completed.

Grading: This question type is not graded on this system and will not affect the final score as it was designed in such a way that it requires manual assistance.

Question Type: Essay
Date Added: Tue 27th Jul 2021
Last Modified: N/A
QID#: 28,532,024

Correctly answered feedback

Because circuit Y is a closed circuit, there are still other paths that the electric current can flow through.

Incorrectly answered feedback

Because circuit Y is a closed circuit, there are still other paths that the electric current can flow through.

[Answers](#) | [Edit](#) | [Duplicate](#) | [Used In](#) | [Reorder](#)

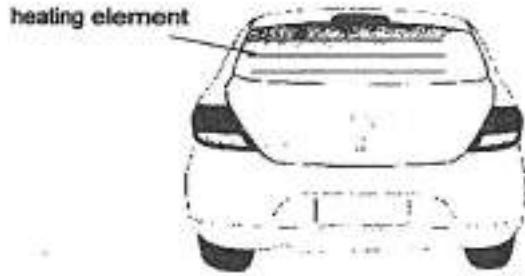
[Remove From Test](#)

Question 57

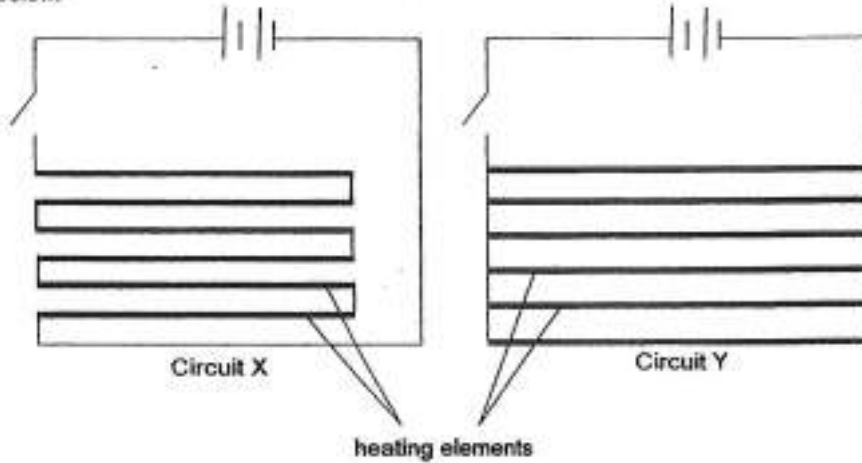
Primary 5 Science » Primary 5 Science (Term 4)

0 pts

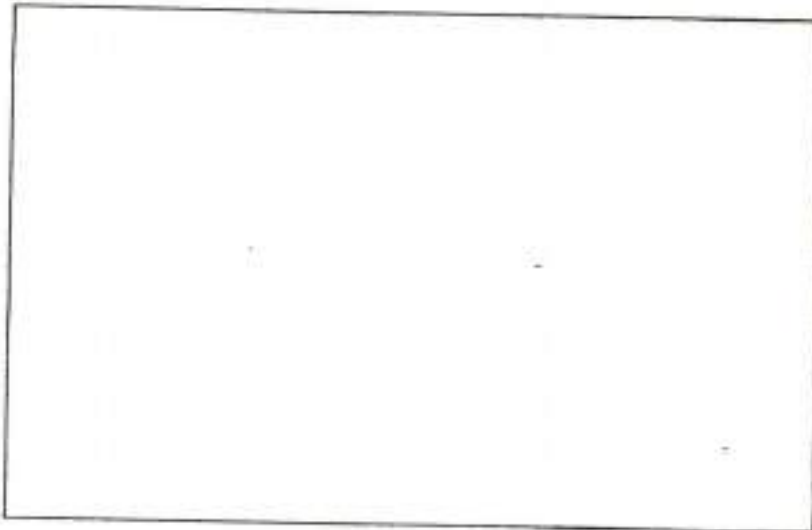
In cold countries, the back window of a car usually contains heating elements. The heating elements are part of an electrical circuit connected to the battery of the car.



There are two ways of connecting the heating elements in a circuit as shown below.



In the box below, draw a circuit diagram that has two bulbs, two batteries, two switches and some connecting wires. Each of the bulbs in the circuit can be controlled independently and the bulbs must shine as brightly as possible. [2]

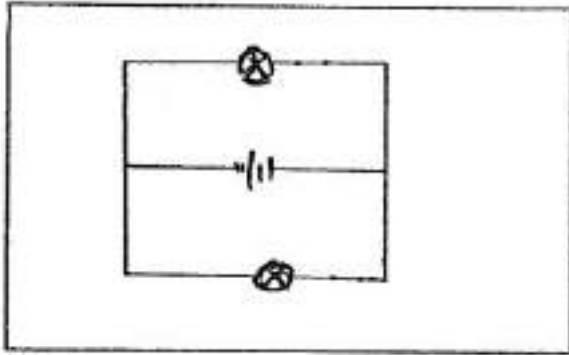


This question is designed for extended answers that parent/ teacher will have to assign and guide child to attempt after the test has been completed.

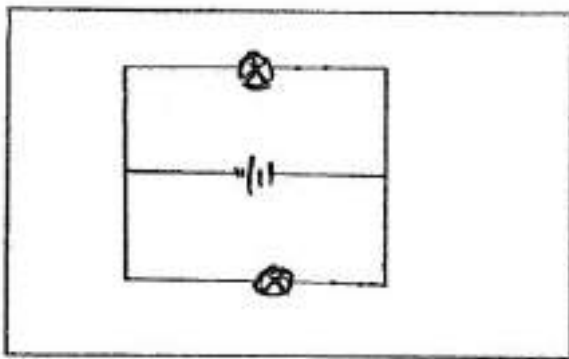
Grading: This question type is not graded on this system and will not affect the final score as it was designed in such a way that it requires manual assistance.

Question Type: Essay
 Date Added: Tue 27th Jul 2021
 Last Modified: N/A
 QID#: 28,532,025

Correctly answered feedback



Incorrectly answered feedback



[Answers](#) | [Edit](#) | [Duplicate](#) | [Used In](#) | [Reorder](#)

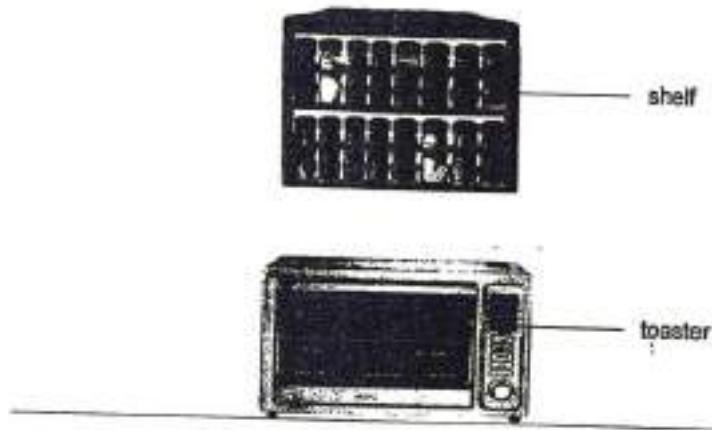
[Remove From Test](#)

Question 58

Primary 5 Science » Primary 5 Science (Term 4)

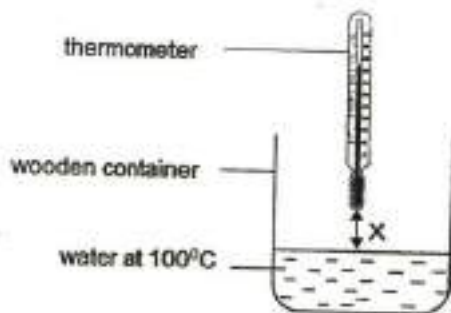
0 pts

Sally wants to build a shelf above her toaster to place some food items. The toaster is usually set at a temperature of 100°C . She does not want the heat given off by the toaster to affect the food items as they are best kept at room temperature.



She conducted the following experiment to find out the suitable height to build the shelf above the toaster. She filled a wooden container with water at 100°C . The experiment has to be conducted over a short period of time so that the temperature of water remained at 100°C throughout the experiment.

She measured the temperature of the air at various distance, X , from the water surface.



The results are shown below.

Distance X (cm)	2	4	6	8	10	12
Temperature of air ($^{\circ}\text{C}$)	95	85	65	40	30	30

Explain how using a wooden container allowed Sally to obtain more accurate results of the experiment? [2]

This question is designed for extended answers that parent/ teacher will have to assign and guide child to attempt after the test has been completed.

Grading: This question type is not graded on this system and will not affect the final score as it was designed in such a way that it requires manual assistance.

Question Type: Essay
 Date Added: Tue 27th Jul 2021
 Last Modified: N/A
 QID#: 28,532,008

Correctly answered feedback

Wood is a poorer conductor of heat so the wooden container will conduct heat away from her hand slower, letting Sally measure the actual temperature.

Incorrectly answered feedback

Wood is a poorer conductor of heat so the wooden container will conduct heat away from her hand slower, letting Sally measure the actual temperature.

[Answers](#) | [Edit](#) | [Duplicate](#) | [Used In](#) | [Reorder](#)

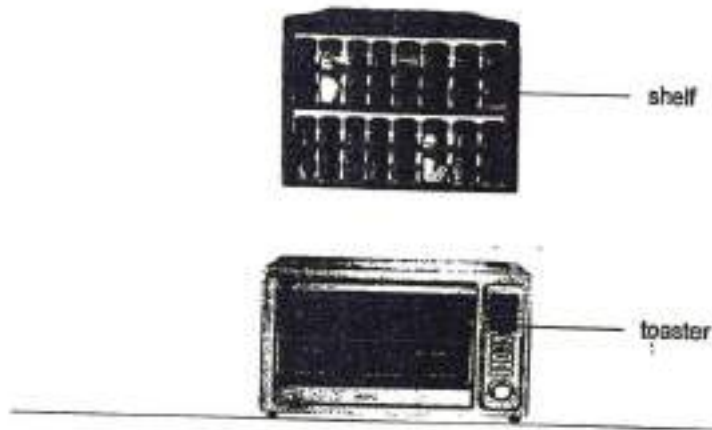
[Remove From Test](#)

Question 59

Primary 5 Science » Primary 5 Science (Term 4)

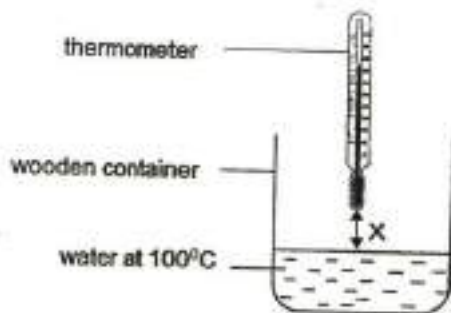
1 pt

Sally wants to build a shelf above her toaster to place some food items. The toaster is usually set at a temperature of 100°C . She does not want the heat given off by the toaster to affect the food items as they are best kept at room temperature.



She conducted the following experiment to find out the suitable height to build the shelf above the toaster. She filled a wooden container with water at 100°C . The experiment has to be conducted over a short period of time so that the temperature of water remained at 100°C throughout the experiment.

She measured the temperature of the air at various distance, X , from the water surface.



The results are shown below.

Distance X (cm)	2	4	6	8	10	12
Temperature of air ($^{\circ}\text{C}$)	95	85	65	40	30	30

Based on the results of the experiment, what is the lowest height to build the shelf above the toaster so that the heat from the toaster will not affect the food items? [1]

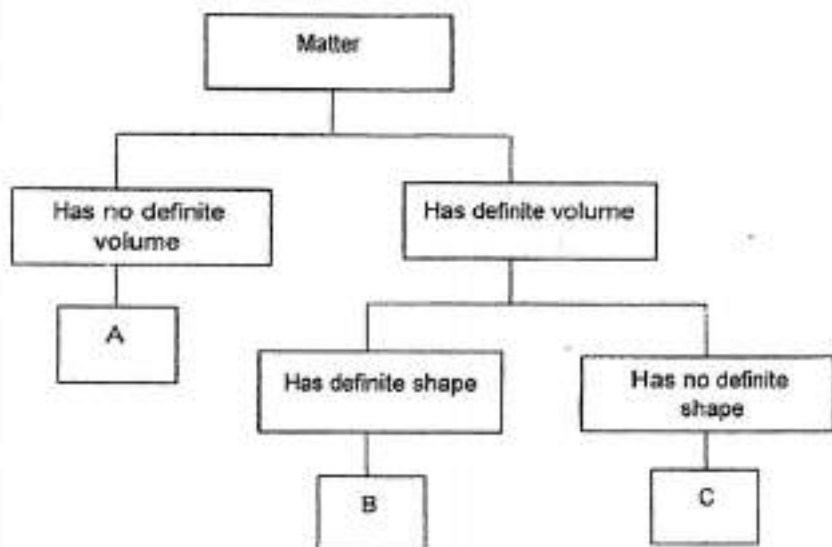
Accepted answers:

- ✓ 10 cm
- ✓ 10cm

Question Type: Free Text
 Date Added: Tue 27th Jul 2021
 Last Modified: N/A
 QID#: 28,532,028

Question 60

Study the flow chart below.



Identify the letter, A, B or C that can represent the following matter.

Matter	Letter
clouds	

Accepted answers:

- ✓ C
- ✓ Letter C

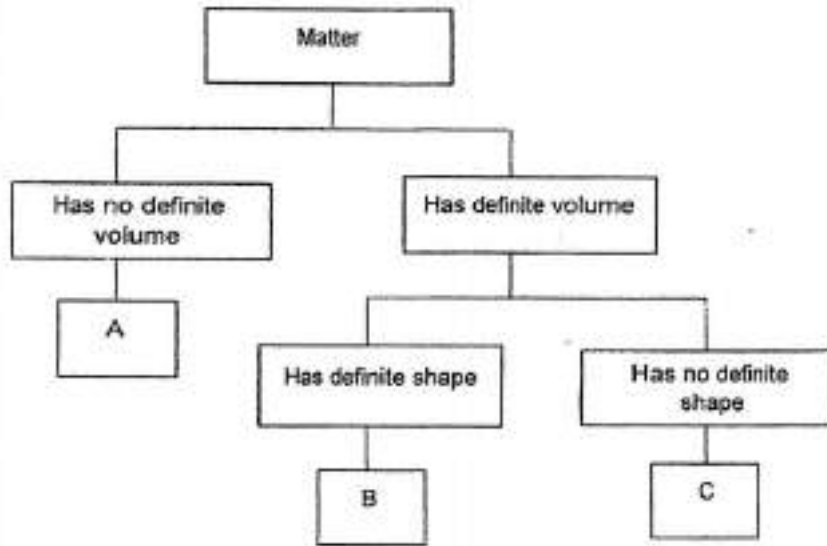
Question Type: Free Text
Date Added: Tue 27th Jul 2021
Last Modified: N/A
QID#: 28,532,030

[↗ Answers](#) | [✎ Edit](#) | [📄 Duplicate](#) | [📌 Used In](#) | [⚙ Reorder](#)

[Remove From Test](#)

Question 61

Study the flow chart below.



Identify the letter A, B or C that can represent the following matter.

Matter	Letter
water vapour	

Accepted answers:

- ✓ A
- ✓ Letter A

Question Type: Free Text
Date Added: Tue 27th Jul 2021
Last Modified: N/A
QID#: 28,532,032

[Answers](#) | [Edit](#) | [Duplicate](#) | [Used In](#) | [Reorder](#)

[Remove From Test](#)